



> RUBY

Is a woven dim out fabric.



TECHNICAL SPECIFICATIONS



Composition

100% polyester



Weight

± 260 gr/m²



Width

295 cm



Fire classification

M1: NF-P92/507 (2004)
IMO Res A471 (XII) - amended by Res A563



Lightfastness

5 - ISO 105 B02 (1999)



Roll length

± 30 m



Obscuring



12 colors

special colors upon request



Cleaning instructions

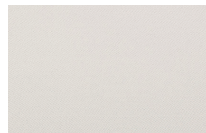
Wash at or below 30°C
Do Not Bleach
Do Not Tumble Dry
Drip Dry
Do Not Dry Clean
Iron, Low Temp



Ironing instructions

Ironing on the woven side

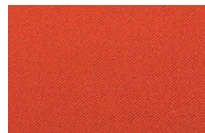
COLORS



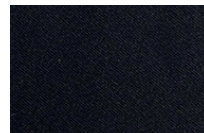
46301



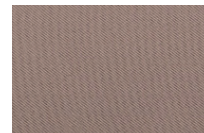
46321



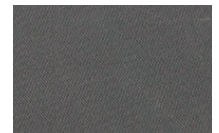
46350



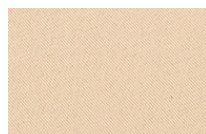
46354



46378



46379



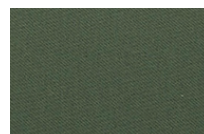
46330



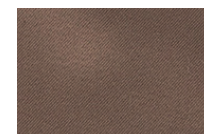
46320



46351



46370



46380



46381

